

# Research Resources Guide

A brief guide to the databases available to CSAS students.

Contact Ms. Sutton for any help you may need:  
[smsutton@okcps.org](mailto:smsutton@okcps.org)



## 2 ways to access the resources

1. Log in to Clever. Scroll down to the Library Resources section.
2. Use the [Destiny Digital Library](#) button on the library's webpage. Resources are listed on the left hand side under Research Links.

EBSCO

Sign in with Google  
Use OKCPS account

## EBSCO Host

[EBSCO](#) is one of the most well-known and diverse database repositories. For general searches, or just to get started, go to Explora High School Resources. There are also more specialized databases we have access to, such as College Journals and the different Reference Centers. Sign in with your Google account to keep a folder of resources in your Drive and to save items in EBSCO.



Click the cloud to access a playlist of database tutorials

## GALE

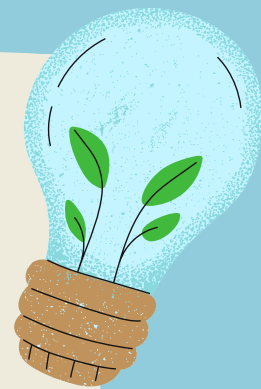
GALE Cengage is another database repository. You have access to the [GALE in Context: High School](#) database as well as [GALE eBooks](#). Sign in with Google to keep a folder of resources in your Drive.

GALE

Password: okla63819

## World Book Online

[WorldBook Online](#) is your go-to encyclopedia source. This is great for getting started on a research topic; the Advanced button is best for high school students. Make sure to visit the Research and Resources tab to access maps, newspapers, and resource guides. Create an account to keep track of your research and create your own guides.



WBO

User Name: wb123  
Password: okcps

## ODL and Metropolitan Libraries

The [Oklahoma Department of Libraries](#) houses tons of resources focusing on law, government, archives, etc. [Oklahoma Digital Prairie](#) focuses on information specific to Oklahoma. The [Metropolitan Library](#) is the city-wide public library network.