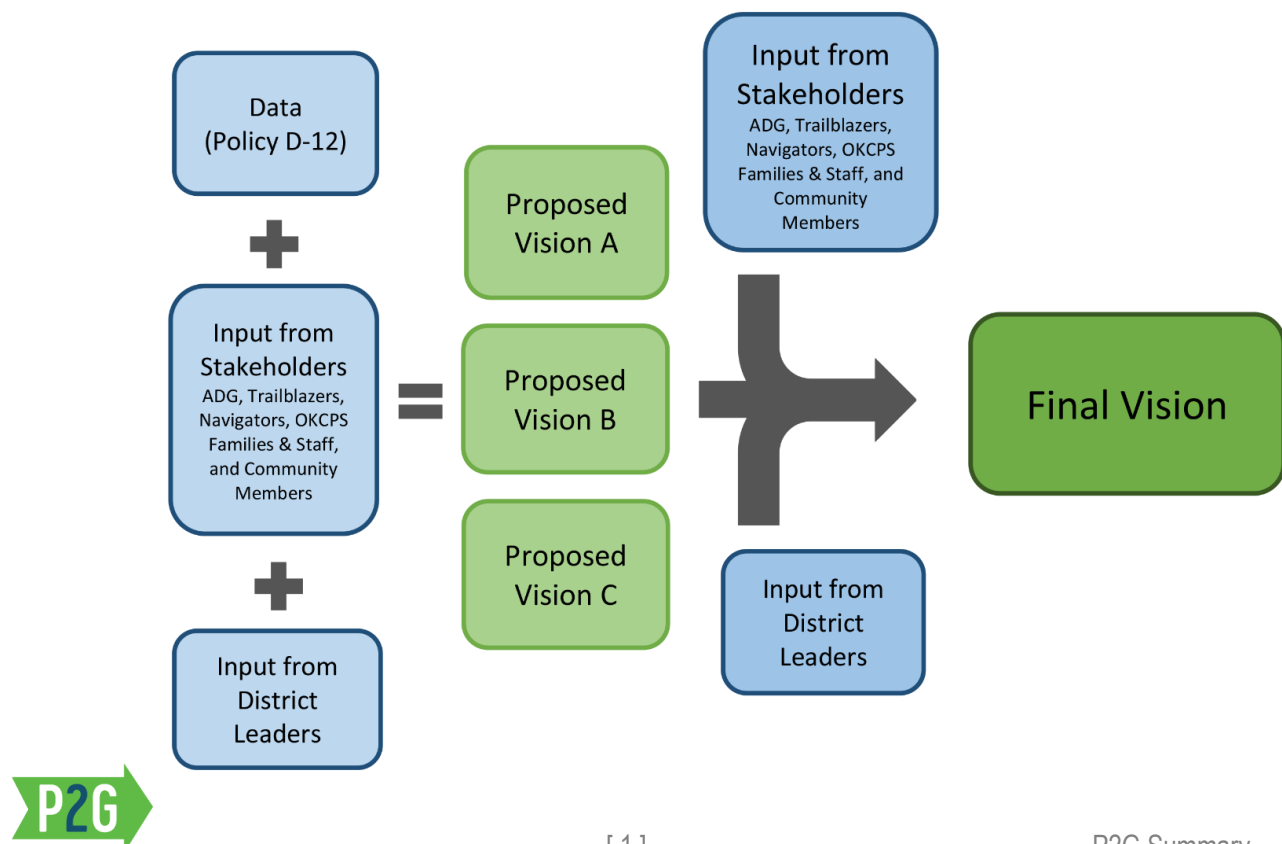


The District is continuing to follow through on our commitment to redesign Oklahoma City Public Schools (OKCPS) for the future. Our top priority for our resources must be providing equitable learning opportunities for our students to achieve our vision of every student graduating ready to fulfill their unique purpose in a healthy, vibrant community.

Trends over time show that our enrollment is declining slightly and will likely level-off in the next couple of years. This means our share of state funding will decline, even if the overall funding level increases again. A comparison of the number of students currently enrolled and the amount of space in our school buildings shows that we are maintaining a lot of instructional space that we aren't using -- a choice that is directing resources to facilities instead of to our students.

The **Pathway to Greatness (P2G)** project is the next step on our journey that began with The Great Conversation and led to our District's strategic plan, The Great Commitment. *Pathway to Greatness (P2G)* will be informed by a thorough assessment of our facilities, a detailed demographic study, and input from our families, staff and community. Two important panels, one of educators (Trailblazers) and one of community representatives (Navigators), will also provide guidance in the process with the help of our Chief of Staff and Chief Operating Officer. In January 2019, leaders will bring three proposals/visions forward to the Superintendent for consideration, and in March 2019 the Oklahoma City Public Schools Board of Education will vote on a final **Long Range Facility Master Plan (LRFMP) that aligns with the collective vision for the future of OKCPS.**

P2G will take place in three phases: 1) data gathering and scenario planning, 2) community input, and 3) leadership decision making. The data, based on District Policy D-12, will serve as a starting point for discussions with our student families and OKCPS community. Those conversations will inform District leadership decisions as we develop a path forward to improve our system and provide equitable access to opportunities that our students deserve.



Oklahoma City Public Schools

Facilities Master Planning

Policy D-12



In July of 2018, the Oklahoma City Public Schools (OKCPS) Board of Education adopted a Facilities Master Planning Policy (Policy D-12) to provide clear direction to the Superintendent in regard to how the Long Range Facility Master Plan (LRFMP) is to be prepared by the District. Goals of Policy D-12 include the following:

- 1. Defining a Data-Informed Process:** Policy D-12 identifies ten (10) specific criteria that should be considered by the Superintendent as a part of master planning activities. The criteria provided in Policy D-12 are clearly written and give specific guidance on what type of data should be gathered and reviewed by the Superintendent and his or her staff when reviewing both existing and proposed facilities within the OKCPS District. Criteria include *Demographics, Facility Utilization Rate, Academic Performance, Physical Plant, Location, Program Considerations, Other Community Services, Safety, Legal Obligations or Restrictions, and Bottom Line Recommendations*.
- 2. Requiring a Consistent Review:** Policy D-12 directs the Superintendent to review data collected on each of the ten (10) criteria every five years. This requirement acknowledges that factors both internal and external to the OKCPS District change and allows an opportunity for OKCPS to adjust its course should the need arise.

- 3. Placing an Emphasis on Timeliness:** Policy D-12 has specific requirements for the Superintendent regarding when changes are implemented. The Policy requires that final decisions impacting school boundaries be made by the regular Board meeting in the Spring for the following school year in order to provide ample time to communicate changes to families.

In an effort to make a data-informed decision, OKCPS is assembling data related to each of the criteria contained within Policy D-12. This data will help OKCPS and the public understand how facilities differ from one another in relation to each criteria. Data for each criteria will be released by OKCPS as it becomes available.

Each data release will include a one-page explanation and summary tables showing how the collected data varies by school across the District. Maps showing the location of all elementary, middle, and high schools are also provided with this summary document. A Criteria Checklist will communicate the date of release for each set of criteria. OKCPS plans to release all criteria data by the end of the calendar year.



Demographics

Criteria A reviews historical population and enrollment trends in each attendance area as well as future projections. The impact of non-traditional learning (distance learning, home schooling) is taken into consideration. Transfers in to and out of the OKCPS system are also considered.



Program Considerations

Criteria F reviews the current and potential offerings available at each school. This review considers both academic offerings such as pre-AP and AP courses, as well as extra-curricular activities such as athletics, physical education, voice, and band. After school programming and clubs are also included in this review.



Facility Utilization Rate

Criteria B reviews enrollment trends in area against the capacity of the school. This criteria looks at the percentage of the building that is used for teaching versus other support spaces like administration and hallways. Special programming like special education is also considered.



Other Community Services

Criteria G reviews what role the school currently plays in the neighborhood beyond the basic educational process as well as any additional expenses associated with those activities. Criteria G also considers the culture and leadership within each school.



Academic Performance

Criteria C reviews current and historical trends of state test data and graduation rates. This review will also look at how each school compares to average graduation rates across the State of Oklahoma.



Safety



**Released
November 5**

Criteria H reviews cases of actual or threatened physical harm at each school. Police reports within each attendance area and severe disciplinary activity at each facility are taken into consideration. A review of maintenance conditions is also a part of the Criteria H review.



Physical Plant

Criteria D looks at each building's age and condition. Site amenities such as playgrounds and other outdoor spaces are also reviewed. During the review of Physical Plant, OKCPS will also determine what bond money needs to be paid off at each site.



Legal Obligations and Restrictions

Criteria I reviews any relevant consent decrees, bond restrictions, or reversionary interests. These legal items have bearing on what OKCPS can do with facilities and properties if they cease to be utilized for educational facilities.



Location



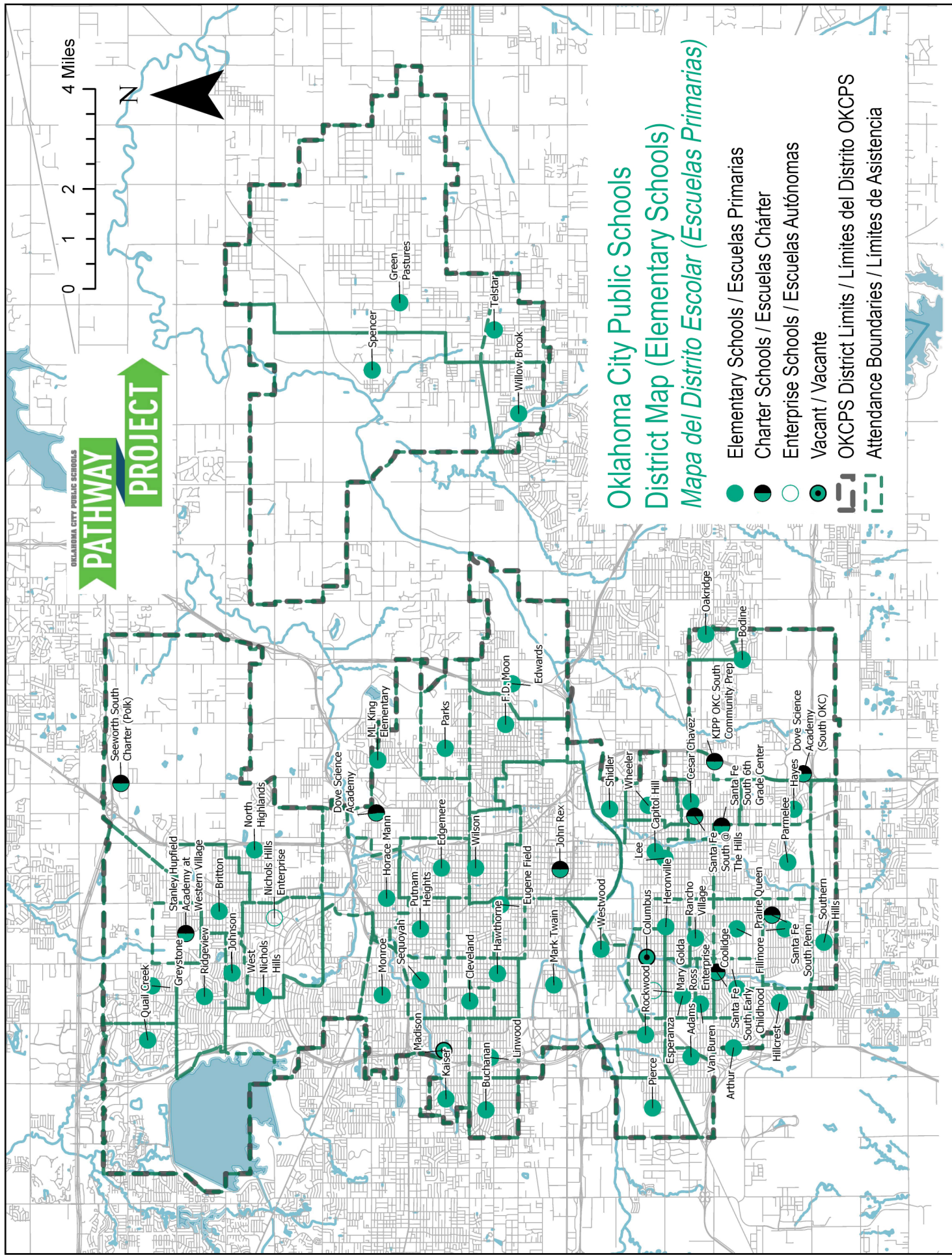
**Released
November 5**

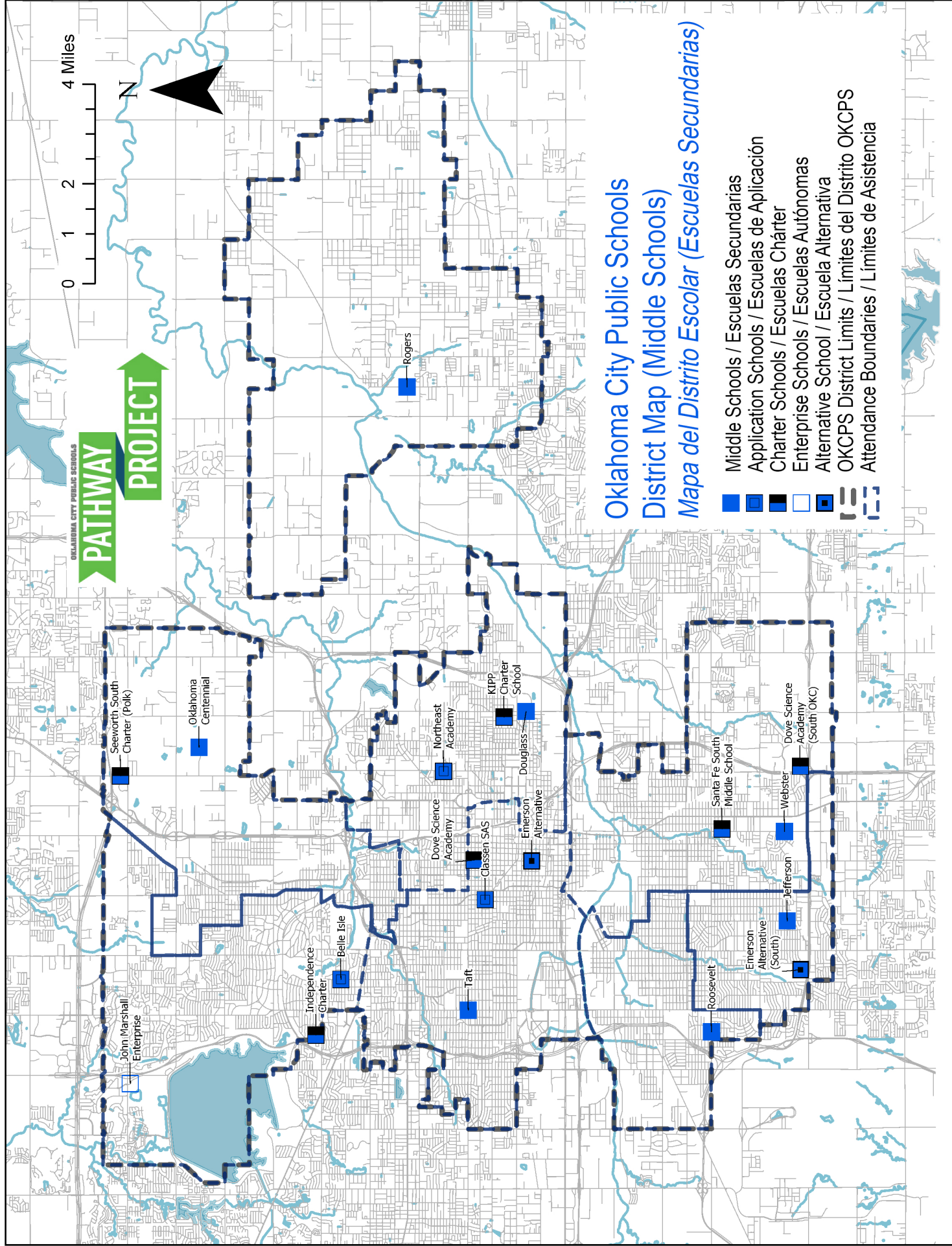
Criteria E reviews how close schools are to one another as well as how many natural and man-made barriers (such as roads) are within the school's attendance area. A review of how many students are located in close proximity to each school is also part of Criteria E.



Bottom Line Impact of Recommendations

Criteria J reviews the other nine (9) criteria in summary and includes an analysis of recommended changes to the OKCPS District. An estimate of annual savings and how those savings might be reinvested into educational instruction is included.





OKLAHOMA CITY PUBLIC SCHOOLS

PATHWAY

PROJECT

Oklahoma City Public Schools

District Map (Middle Schools)

Mapa del Distrito Escolar (Escuelas Secundarias)

- Middle Schools / Escuelas Secundarias
- Application Schools / Escuelas de Aplicación
- Charter Schools / Escuelas Chárter
- Enterprise Schools / Escuelas Autónomas
- Alternative School / Escuela Alternativa
- OKCPS District Limits / Límites del Distrito OKCPS
- Attendance Boundaries / Límites de Asistencia

Seeworth South
Charter (Polk)

Oklaoma
Centennial

Northeast
Academy

Dove Science
Academy

Classen SAS

Emerson
Alternative

Douglass
Charter School

KIPP

Santa Fe South
Middle School

Dove Science
Academy
(South OKC)

Webster

John Marshall
Enterprise

Independence
Charter

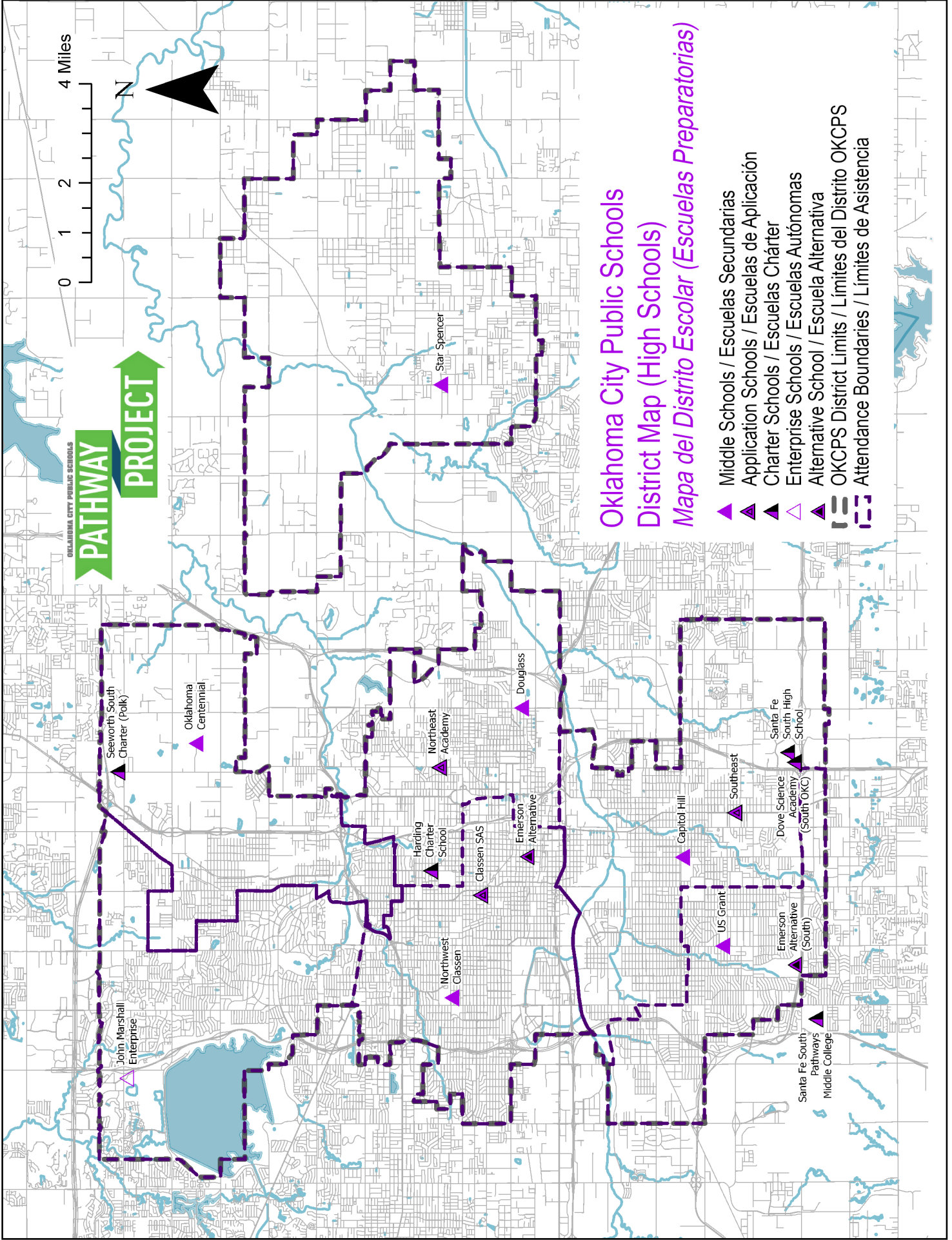
Belle Isle

Taft

Roosevelt

Emerson
Alternative
(South)

Jefferson





Criteria: Location

As identified by the Oklahoma City Public Schools (OKCPS) Board of Education's Facilities Master Planning Policy adopted in July 2018 (Policy D-12), evaluation of district facilities shall include:

"...An analysis of the proximity of schools (e.g. where might we have schools that are "clustered together" [more] than the average distance). The location review will take into account any natural barriers, and how they impact the student population."

The language in the criteria above speaks to an over-arching objective to break down barriers and encourage a synergistic relationship between each facility and the community it serves.

Data Collected

Each facility was evaluated on the following:

Number of peer schools within two miles: Using Geographic Information System (GIS), an industry-standard mapping platform, ADG has assembled data indicating how many peer school facilities are located within two miles of each site. This information is important to the master planning process as it indicates sites that could be repurposed without causing students and families to travel significantly longer distances to get to a peer OKCPS facility. A radius of two miles was chosen as it represents roughly a five to 10-minute drive for students and families.

Length of rivers within attendance boundary: GIS analysis was used to determine the length of rivers and creeks within each attendance area boundary. This information is important in that it indicates which schools have more barriers for students and families walking or driving to school. Data used in this analysis was assembled from OKCPS and publicly available sources.

Length of major roadways within attendance boundary: GIS analysis was also used to determine the length of major roadways within each attendance area boundary. In general, OKCPS considers arterial roads, highways, and interstates to be major roadways. This information is important in that it indicates the general number of major corridors that families and students may have to be cross to get to school. Data used in this analysis was assembled from OKCPS and publicly available sources.

Number of attendance-age students within one mile: OKCPS has assembled demographic data that provide the age and location of children who live across the Greater Oklahoma City area. These data are important to the master planning process as it quantifies the number of appropriately-aged children that live in close proximity to each school. A radius of one mile has been selected in order to identify students that are within a 15 to 20 minute walk to each school site.

Long Range Facility Master Plan Guiding Principles

GOALS TO AIM FOR

- E1. **Proper Spacing:** School facilities that are reasonably spaced from peer OKCPS facilities. Ideally, peer facilities should be no closer than one-mile from each other.
- E2a. **Walkability:** Sites that are easily accessible by students and families who may be walking to and from school.
- E2b. **Connectivity:** Facilities that have direct pedestrian connections to the attendance areas they serve. Facilities that are located further from the edge of their respective attendance area are preferred.
- E3. **High Student Density:** Facilities that are less than one mile from large populations of OKCPS students that might use the facility.
- E4. **Central:** Sites centrally located within their attendance area. Ideally, school sites should be located at the interior of neighborhoods and should be buffered on each side to major roads.

THINGS TO AVOID

- E5. **Lack of Access:** Sites that are difficult to reach safely by children and families who may be walking to and from school.
- E6. **Barriers:** Attendance areas that span across significant natural and man-made barriers including creeks, rivers, and major roadways.
- E7. **Edges:** Sites located near the perimeter of the attendance area they serve.
- E8. **Clustering:** Facility locations that are close to peer facilities.
- E9. **Low Student Density:** Facilities situated more than one mile from large populations of OKCPS students who might use the facility.

Facility Description	Facility Type	Location / Address	Number of Peer Schools Within 2-mi	Length of Rivers within Attendance Boundary (ft)	Length of Major Roadways within Attendance Boundary (ft)	Number of attendance-age students within 1-mile
Adams Elementary	Elementary	3416-22 SW 37th	8	-	29,898	1,207
Arthur Elementary	Elementary	5100 S Independence	5	-	24,381	948
Bodine Elementary	Elementary	5301 S Bryant	1	17,871	133,672	504
Britton Elementary	Elementary	1201-15 NW 55th	5	1,417	20,026	632
Buchanan Elementary	Elementary	4126-44 NW 18th	3	-	10,157	821
Capitol Hill Elementary	Elementary	2701-23 Robinson	7	19,595	22,371	702
Cesar Chavez Elementary	Elementary	600 SE Grand Blvd.	6	1,080	18,712	878
Cleveland Elementary	Elementary	2711-25 NW 23rd	6	17	7,273	837
Columbus Elementary	Vacant (ES)	2402-12 S Pennsylvania	8	5,393	6,890	1,202
Coolidge Elementary	Elementary	5210-22 S Villa	9	6,105	9,202	1,550
Dove Science Academy	Charter (ES)	919 NW 23rd Street	3	3,221	18,085	84
Dove Science Academy (South OKC)	Charter (ES)	7202 S I-35 Service Road	2	1,029	22,634	293
Edgemere Elementary	Elementary	3200-3210 N Walker	6	3,652	42,440	234
Edwards Elementary	Elementary	1123 NE Grand Blvd	1	18,210	80,299	278
Esperanza Elementary	Elementary	3517 S Linn	10	3,457	5,308	1,303
Eugene Field Elementary	Elementary	1515 N Klein	5	171	16,948	624
F.D. Moon - Elementary	Elementary	1901 NE 13th	2	1,859	23,842	375
Fillmore Elementary	Elementary	5200 S Blackwelder	10	1	10,386	1,291
Foster Property 20.09 Acres (no improvements)	Vacant Property (ES)	SE 51st & Foster	2	1,070	21,022	729
Gatewood Elementary	Elementary	1821 NW 21st	7	-	9,695	876
Green Pastures Elementary	Elementary	4300 N Post Rd	1	10,791	166,262	80
Greystone Elementary	Elementary	2401 NW 115th	3	9,224	41,960	379
Hawthorne Elementary	Elementary	2300 NW 15th	6	-	8,457	838
Hayes Elementary	Elementary	6900 S Byers	3	682	25,568	450
Heronville Elementary	Elementary	1240 SW 29th	10	826	7,091	1,284
Hillcrest Elementary	Elementary	6411 S Miller	8	173	7,744	1,014
Horace Mann Elementary	Elementary	1105 NW 45th	5	20,551	101,888	335
John Rex Charter School	Charter (ES)	500 W Sheridan	3	10,188	124,015	18
Johnson Elementary	Elementary	1800-1810 Sheffield Rd	5	-	4,218	295
Kaiser Elementary	Elementary	3121-3129 Lyon Blvd	3	9,057	27,347	526
KIPP OKC South Community Prep	Charter (ES)	4505 South I-35 Service Road	4	2,513	15,250	416
Lee Elementary	Elementary	412-424 SW 29th	8	4,565	10,029	776
Linwood Elementary	Elementary	3416 NW 17th	5	-	33,138	956
Madison Elementary	Vacant (ES)	3101-17 N Independence	6	3,514	20,355	582
Mark Twain Elementary	Elementary	2451 W Main	2	21,569	125,048	122
Mary Golda Ross Enterprise	Enterprise (ES)	2601 S Villa	8	4,549	7,733	921
ML King Elementary	Elementary	1201 NE 48th St	2	5,113	58,331	232
Monroe Elementary	Elementary	4810 N Linn	4	5,674	93,805	412
Nichols Hills Elementary	Elementary	1413 W Wilshire	4	4,979	20,518	227
North Highlands Elementary	Elementary	8400 N Robinson	2	25,513	247,072	365
Oakridge Elementary	Elementary	4100 S Leonhardt	1	378	7,328	304
Parks Elementary	Elementary	1501 NE 30th	2	716	23,375	401
Parmelee Elementary	Elementary	6700 S Hudson	7	13,598	34,690	650
Pierce Elementary	Elementary	2701 S Tulsa	1	4,301	18,861	367
Prairie Queen Elementary	Elementary	6609 S Blackwelder	7	3,682	12,797	1,221
Putnam Heights Elementary	Elementary	1601-05 NW 36th	7	1,770	13,565	640
Quail Creek Elementary	Elementary	11700 Thorn Ridge Rd	2	74,915	68,764	284
Rancho Village Elementary	Elementary	1401-31 Johnston Dr	10	-	5,044	1,487
Ridgeview Elementary	Elementary	10010 Ridgeview Dr	6	3,059	31,331	270
Rockwood Elementary	Elementary	3101 SW 24th	5	4,684	24,153	899
Ross Property 8.64 Acres (no improvements)	Vacant Property (ES)	4120 S. Magnolia	2	5,781	42,474	1,863
Santa Fe South 6th Grade Center	Charter (ES)	4701 South Shields Boulevard	8	2,732	5,582	875
Santa Fe South Early Childhood	Charter (ES)	2222 SW 44th Street	12	3,221	5,641	1,590
Santa Fe South Penn	Charter (ES)	5325 South Pennsylvania	8	2,435	5,868	1,199
Sante Fe South @ The Hills	Charter (ES)	301-25 SE 38th	6	2,398	8,079	909

Table E.1 Elementary Schools

Facility Description	Facility Type	Location / Address	Number of Peer Schools Within 2-mi	Length of Rivers within Attendance Boundary (ft)	Length of Major Roadways within Attendance Boundary (ft)	Number of attendance-age students within 1-mile
Adams Elementary	Elementary	3416-22 SW 37th	8	-	29,898	1,207
Seeworth South Charter School (Polk)	Charter (ES)	3806 N Prospect	-	1,133	24,020	11
Sequoyah Elementary	Elementary	2400 NW 36th	7	3,930	19,674	676
Shidler Elementary	Elementary	1401-25 S Byers	4	7,200	15,361	414
Southern Hills Elementary	Elementary	7800 S Kentucky	4	2,629	77,756	674
Spencer Elementary	Elementary	8900 NE 50th	1	43,449	144,096	85
Stanley Hupfield Academy at Western Village	Charter (ES)	1508 NW 106th	4	1,313	10,698	460
Telstar Elementary	Elementary	9521 NE 16th	1	301	16,629	275
Van Buren Elementary	Elementary	2700 SW 40th	11	2,121	4,284	1,545
West Nichols Hills Elementary	Elementary	8400 Greystone	3	23,817	70,843	168
Westwood Elementary	Elementary	1111 S Kentucky	5	19,053	33,519	404
Wheeler Elementary	Elementary	501-03 SE 25th	7	37	7,978	758
Willow Brook Elementary	Elementary	8105 NE 10th	1	8,908	13,637	410
Wilson Elementary	Elementary	2205 S Walker	4	1,529	29,667	284

Facility / Site not associated with attendance zone. GIS analysis performed using circular buffer equal to average area of attendance zones associated with peer facilities.

Facility Description	Facility Type	Location / Address	Number of Peer Schools Within 2-mi	Length of Rivers within Attendance Boundary (ft)	Length of Major Roadways within Attendance Boundary (ft)	Number of attendance-age students within 1-mile
Belle Isle Enterprise	Application (MS)	5800-5830 N Villa	1	20,666	109,849	44
Classen SAS	Application (MS)	1819 N Ellison	2	5,176	80,196	152
Douglass	Middle	800-1000 N Eastern	1	31,327	285,315	74
Dove Science Academy	Charter (MS)	4901 North Lincoln Boulevard	3	4,422	72,595	13
Dove Science Academy (South OKC)	Charter (MS)	7202 S I-35 Service Road	1	10,575	81,144	117
Emerson Alternative & Addition	Alternative (MS)	715 N Walker	2	12,278	93,305	41
Emerson Alternative (South)	Alternative (MS)	2219 SW 74th Street	1	14,572	81,387	303
Foster Property 20.09 Acres (no improvements)	Vacant Property (MS)	SE 51st & Foster	2	28,874	185,249	265
Independence CharterSchool	Charter (MS)	3216-26 NW 65th	1	23,192	81,234	37
Jefferson	Middle	6800 S Blackwelder	2	14,706	131,028	393
John Marshall	Middle	12201 N Portland Ave	-	116,001	247,046	26
KIPP Charter School (co-located at Moon Elementary School)	Charter (MS)	1901 NE 13th	2	10,122	96,816	134
Northeast Academy	Application (MS)	3100-22 N Kelly	2	5,301	71,276	108
Oklahoma Centennial	Middle	1301 NE 101st	-	48,777	382,101	235
Rogers	Middle	4000 N Spencer Rd	-	63,412	344,239	48
Roosevelt	Middle	3233 SW 44th	-	38,116	152,551	443
Ross Property 8.64 Acres (no improvements)	Vacant Property (MS)	4120 S. Magnolia	2	43,545	195,097	718
Santa Fe South Middle School	Charter (MS)	4712 South Santa Fe	1	12,052	65,021	349
Seeworth South Charter School (Polk)	Charter (MS)	3806 N Prospect	-	6,822	88,016	1
Taft	Middle	2801-11 NW 23rd	-	43,822	403,195	246
Webster	Middle	6708 S Santa Fe	3	73,691	336,594	227
Facility / Site not associated with attendance zone. GIS analysis performed using circular buffer equal to average area of attendance zones associated with peer facilities.						

Facility Description	Facility Type	Location / Address	Number of Peer Schools Within 2-mi	Length of Rivers within Attendance Boundary (ft)	Length of Major Roadways within Attendance Boundary (ft)	Number of attendance-age students within 1-mile
Capitol Hill	High	510-36 SW 36th	1	102,867	391,618	356
Classen SAS	Application (HS)	1819 N Ellison	2	7,744	100,627	199
Douglass	High	800-1000 N Eastern	-	31,327	285,315	120
Dove Science Academy (South OKC)	Charter (HS)	7202 S I-35 Service Road	2	16,443	94,116	125
Emerson Alternative & Addition	Alternative (HS)	715 N Walker	1	14,754	105,006	47
Emerson Alternative (South)	Alternative (HS)	2219 SW 74th Street	2	18,661	91,421	392
Foster Property 20.09 Acres (no improvements)	Vacant Property (HS)	SE 51st & Foster	2	48,900	230,247	311
Harding Charter School	Charter (HS)	3401-15 N Shartel	1	15,426	113,792	70
John Marshall	High	12201 N Portland Ave	-	116,000	247,046	17
Northeast Academy	Application (HS)	3100-22 N Kelly	-	8,812	88,884	142
Northwest Classen	High	2801 NW 27th	-	43,822	403,195	288
Oklahoma Centennial	High	1301 NE 101st	-	48,802	370,194	2
Ross Property 8.64 Acres (no improvements)	Vacant Property (HS)	4120 S. Magnolia	2	30,774	225,748	675
Santa Fe South High School	Charter (HS)	6921 Plaza Mayor Boulevard	2	13,037	84,396	124
Santa Fe South Pathways Middle College	Charter (HS)	7777 South May Avenue	1	20,336	84,396	95
Seeworth South Charter School (Polk)	Charter (HS)	3806 N Prospect	-	8,297	103,059	4
Southeast	Application (HS)	5401 S Shields	3	16,048	91,464	278
Star Spencer	High	3001 N Spencer Rd	-	63,412	344,239	58
US Grant	High	5016 S Pennsylvania	1	23,644	228,680	665

Facility / Site not associated with attendance zone. GIS analysis performed using circular buffer equal to average area of attendance zones associated with peer facilities.



Criteria: Safety

As identified by the Oklahoma City Public Schools (OKCPS) Board of Education's Facilities Master Planning Policy adopted in July 2018 (Policy D-12), evaluation of district facilities shall include:

"...A review of cases of actual or threatened physical harm, (e.g. police calls, severe disciplinary actions, gang territory and activity) as well as any unsafe conditions associated with the physical structures themselves."

It is obvious why safety is included in Policy D-12. **The safety of OKCPS students is the District's highest priority.** The specific language in the policy directs the District to consider not only safety concerns which may be created by students or people in and around OKCPS facilities, but also maintenance issues associated with the building and grounds at each site.

Data Collected

Each facility was evaluated on the following:

Total estimated police reports filed within attendance boundary (CY 2010 and CY 2017): Using Geographic Information System (GIS), an industry-standard mapping platform, ADG has assembled summary crime data across the entire OKCPS District based on information provided by the Oklahoma City Police Department (OKCPD) and the Oklahoma State Board of Investigation (OSBI). Crime data included in the analysis is based on only those police calls which resulted in actual reports being filed and was narrowed to exclude reports such as traffic accidents, DUIs, and loitering. This information can help indicate which sites may be safer and which sites may expose students to more criminal activity.

Note: Crime data was collected for CY 2010 and 2017. Two samples of crime data were included to ensure that isolated peaks in crime data could be taken into consideration as a part of the planning process.

Suspensions at facility (SY 2010-2011 and 2016-2017): OKCPS has assembled suspension data for all OKCPS-operated facilities. This information is important to the planning process because (1) suspensions tend to be related to student violence or altercations, property crime, or drug-related activities, and (2) schools with lower rates of suspension generally represent a safer learning environment for children. Suspension data was assembled for both SY 2010-11 and SY 2016-17 to ensure the data collected was representative of each school.

Conditions at facility: An independent consultant visited every OKCPS-owned facility and made note of any and all maintenance issues. The consultant found no immediate safety concerns, though some issues should be addressed as soon as possible.

Long Range Facility Master Plan Guiding Principles

GOALS TO AIM FOR

- H1. **Lower Crime Areas:** Facilities should be located, to the degree possible, where lower crime rates exist. Neighborhoods and other locations with lower rates of crime activity provide students with a safer learning environment as well as a safer route to and from school.
- H2. **Reduced Levels of Suspension:** Facilities with lower rates of suspensions are generally safer for OKCPS students, families, and employees. Put another way, rates of suspension represent fewer times that students may be exposed to student violence/altercations, property crime, or drug-related activities while at an OKCPS facility.
- H3. **Better Physical Conditions:** As with any school district of considerable size, the age and physical condition of facilities across the District vary considerably. Newer facilities with fewer critical maintenance requirements should be utilized to the degree possible.

THINGS TO AVOID

- H4. **Higher Crime Areas:** Neighborhoods where higher crime rates exist should be avoided to the degree possible. Consideration of the entire attendance area should be examined – particularly as it relates to students and families who may be walking to and from school.
- H5. **Increased Levels of Suspension Rates:** Higher suspension rates are indicative of a learning environment that may be less safe for OKCPS students, families, and employees. Facility-related decisions which serve to expose more people to potentially unsafe activities should be avoided to the degree possible.
- H6. **Poor Physical Conditions:** Older facilities within the District typically have more maintenance requirements. Continued or expanded use of facilities with more critical maintenance requirements should be avoided.

Facility Description	Facility Type	Location / Address	Total Estimated Police Reports filed within Attendance Boundary (CY 2010)	Total Estimated Police Reports filed within Attendance Boundary (CY 2017)	Suspensions at Facility (SY 2010-2011)	Suspensions at Facility (SY 2016-2017)	Critical Conditions at Facility
Adams Elementary	Elementary	3416-22 SW 37th	443	328	17	45	5
Arthur Elementary	Elementary	5100 S Independence	765	619	24	29	6
Bodine Elementary	Elementary	5301 S Bryant	1,209	927	137	7	3
Britton Elementary	Elementary	1201-15 NW 55th	719	627	39	52	4
Buchanan Elementary	Elementary	4126-44 NW 18th	557	357	7	13	8
Capitol Hill Elementary	Elementary	2701-23 Robinson	1,289	997	78	74	5
Cesar Chavez Elementary	Elementary	600 SE Grand Blvd.	728	678	-	20	4
Cleveland Elementary	Elementary	2711-25 NW 23rd	454	576	18	3	5
Coolidge Elementary	Elementary	5210-22 S Villa	811	575	36	17	4
Dove Science Academy	Charter (ES)	919 NW 23rd Street	6,702	5,634	ND	ND	NAS
Dove Science Academy	Charter (ES)	4901 North Lincoln Boulevard	202	268	ND	ND	NAS
Dove Science Academy (South OKC)	Charter (ES)	7202 S I-35 Service Road	422	395	ND	ND	NAS
Edgemere Elementary	Elementary	3200-3210 N Walker	613	443	38	20	6
Edwards Elementary	Elementary	1123 NE Grand Blvd	634	579	37	6	7
Esperanza Elementary	Elementary	3517 S Linn	445	353	35	32	4
Eugene Field Elementary	Elementary	1515 N Klein	701	554	53	8	4
F.D. Moon Elementary	Elementary	1901 NE 13th	1,267	1,173	51	37	3
Fillmore Elementary	Elementary	5200 S Blackwelder	679	690	9	21	5
Foster Property 20.09 Acres (no improvements)	Vacant Property (ES)	SE 51st & Foster	791	518	NA	NA	NA
Gatewood Elementary	Elementary	1821 NW 21st	446	374	44	9	3
Green Pastures Elementary	Elementary	4300 N Post Rd	391	299	28	36	5
Greystone Elementary - Adm Offices	Elementary	2401 NW 115th	1,508	1,226	81	79	23
Hawthorne Elementary	Elementary	2300 NW 15th	594	541	6	9	6
Hayes Elementary	Elementary	6900 S Byers	469	404	49	35	5
Heronville Elementary	Elementary	1240 SW 29th	597	424	35	97	6
Hillcrest Elementary	Elementary	6411 S Miller	660	522	18	16	5
Horace Mann Elementary	Elementary	1105 NW 45th	644	383	14	15	7
John Rex Charter School	Charter (ES)	500 W Sheridan	2,413	2,203	-	-	4
Johnson Elementary	Elementary	1800-1810 Sheffield Rd	78	56	16	1	5
Kaiser Elementary	Elementary	3121-3129 Lyon Blvd	825	790	12	38	4
KIPP OKC South Community Prep	Charter (ES)	4505 South I-35 Service Road	599	558	ND	ND	NAS
Lee Elementary	Elementary	412-424 SW 29th	786	695	38	42	3
Linwood Elementary	Elementary	3416 NW 17th	576	435	-	14	6
Mark Twain Elementary	Elementary	2451 W Main	885	911	10	-	4
Mary Golda Ross Enterprise	Enterprise (ES)	2601 S Villa	980	809	180	14	12
ML King Elementary	Elementary	1201 NE 48th St	1,133	1,049	124	24	3
Monroe Elementary	Elementary	4810 N Linn	971	849	14	27	5
Nichols Hills Elementary	Elementary	1413 W Wilshire	107	109	13	5	6
North Highlands Elementary	Elementary	8400 N Robinson	1,005	824	16	75	4
Oakridge Elementary	Elementary	4100 S Leonhardt	232	154	53	9	4
Parks Elementary	Elementary	1501 NE 30th	831	767	127	41	5
Parmelee Elementary	Elementary	6700 S Hudson	1,532	1,516	137	65	6
Pierce Elementary	Elementary	2701 S Tulsa	332	274	15	9	3
Prairie Queen Elementary	Elementary	6609 S Blackwelder	1,092	942	18	60	8
Putnam Heights Elementary	Elementary	1601-05 NW 36th	651	532	1	11	4
Quail Creek Elementary	Elementary	11700 Thorn Ridge Rd	401	520	1	14	5
Rancho Village Elementary	Elementary	1401-31 Johnston Dr	447	450	15	8	8
Ridgeview Elementary	Elementary	10010 Ridgeview Dr	277	187	10	4	6
Rockwood Elementary	Elementary	3101 SW 24th	489	351	42	27	7
Ross Property 8.64 Acres (no improvements)	Vacant Property (ES)	4120 S. Magnolia	658	626	NA	NA	NA
Santa Fe South 6th Grade Center	Charter (ES)	4701 South Shields Boulevard	1,042	906	ND	ND	NAS
Santa Fe South Early Childhood	Charter (ES)	2222 SW 44th Street	1,413	1,239	ND	ND	NAS
Santa Fe South Penn	Charter (ES)	5325 South Pennsylvania	1,310	1,269	ND	ND	NAS
Sante Fe South @ The Hills	Charter (ES)	301-25 SE 38th	1,165	1,000	ND	ND	4
Seeworth South Charter School (Polk)	Charter (ES)	3806 N Prospect	129	103			3
Sequoyah Elementary	Elementary	2400 NW 36th	580	532	11	23	6
Shidler Elementary	Elementary	1401-25 S Byers	143	201	27	30	5
Southern Hills Elementary	Elementary	7800 S Kentucky	1,515	1,282	24	20	4
Spencer Elementary	Elementary	8900 NE 50th	229	174	47	39	5
Stanley Hupfield Academy at Western Village	Charter (ES)	1508 NW 106th	457	408	ND	ND	59
Telstar Elementary	Elementary	9521 NE 16th	178	118	25	48	4

Facility Description	Facility Type	Location / Address	Total Estimated Police Reports filed within Attendance Boundary (CY 2010)	Total Estimated Police Reports filed within Attendance Boundary (CY 2017)	Suspensions at Facility (SY 2010-2011)	Suspensions at Facility (SY 2016-2017)	Critical Conditions at Facility
Van Buren Elementary	Elementary	2700 SW 40th	359	279	37	13	4
West Nichols Hills Elementary	Elementary	8400 Greystone	1,471	1,414	3	4	5
Westwood Elementary (no gymnasium)	Elementary	1111 S Kentucky	429	420	-	13	6
Wheeler Elementary	Elementary	501-03 SE 25th	352	375	33	2	6
Willow Brook Elementary	Elementary	8105 NE 10th	192	127	20	39	15
Wilson Elementary	Elementary	2205 S Walker	498	348	3	47	10

Facility / Site not associated with attendance zone. GIS analysis performed using circular buffer equal to average area of attendance zones associated with peer facilities.

Portion of attendance area extends outside of City of Oklahoma City Limits

NA: Not applicable
ND: No Data
NAS: Not Assessed

Facility Description	Facility Type	Location / Address	Total Estimated Police Reports filed within Attendance Boundary (CY 2010)	Total Estimated Police Reports filed within Attendance Boundary (CY 2017)	Suspensions at Facility (SY 2010-2011)	Suspensions at Facility (SY 2016-2017)	Critical Conditions at Facility
Ross Property 8.64 Acres (no improvements)	Vacant Property (MS)	4120 S. Magnolia	4,140	3,587	NA	NA	NA
Foster Property 20.09 Acres (no improvements)	Vacant Property (MS)	SE 51st & Foster	2,053	1,647	NA	NA	NA
Emerson Alternative & Addition	Alternative (MS)	715 N Walker	5,537	4,738	-	-	5
Emerson Alternative (South)	Alternative (MS)	2219 SW 74th Street	6,373	5,166	-	-	4
Independence Charter School	Charter (MS)	3216-26 NW 65th	3,306	3,067	ND	ND	3
KIPP Charter School (co-located at Moon Element)	Charter (MS)	1901 NE 13th	3,229	3,034	ND	ND	6
Seeworth South Charter School (Polk)	Charter (MS)	3806 N Prospect	756	676	ND	ND	2
Dove Science Academy (South OKC)	Charter (MS)	7202 S I-35 Service Road	3,036	2,954	ND	ND	NAS
Santa Fe South Middle School	Charter (MS)	4712 South Santa Fe	6,536	5,952	ND	ND	NAS
Jefferson	Middle	6800 S Blackwelder	5,561	4,736	247	610	3
Rogers	Middle	4000 N Spencer Rd	985	726	212	185	5
Roosevelt	Middle	3233 SW 44th	4,217	3,379	396	320	9
Taft	Middle	2801-11 NW 23rd	9,526	8,363	340	430	8
Webster	Middle	6708 S Santa Fe	7,139	6,254	268	565	10
Belle Isle Enterprise	Enterprise (MS)	5800-5830 N Villa	4,520	4,056	40	16	6
Oklahoma Centennial	Middle	1301 NE 101st	2,831	2,248	194	425	8
Classen SAS	Charter (MS)	1819 N Ellison	6,824	5,845	-	-	13
Douglass	Middle	800-1000 N Eastern	4,946	4,488	269	308	24
John Marshall	Middle	12201 N Portland Ave	3,847	3,512	215	274	4
Northeast Academy	Charter (MS)	3100-22 N Kelly	4,215	3,751	36	44	3

Facility / Site not associated with attendance zone. GIS analysis performed using circular buffer equal to average area of attendance zones associated with peer facilities.

Portion of attendance area extends outside of City of Oklahoma City Limits

NA: Not applicable
ND: No Data
NAS: Not Assessed

Facility Description	Facility Type	Location / Address	Total Estimated Police Reports filed within Attendance Boundary (CY 2010)	Total Estimated Police Reports filed within Attendance Boundary (CY 2017)	Suspensions at Facility (SY 2010-2011)	Suspensions at Facility (SY 2016-2017)	Critical Conditions at Facility
Ross Property 8.64 Acres (no improvements)	Vacant Property (HS)	4120 S. Magnolia	4,852	4,247	NA	NA	NA
Foster Property 20.09 Acres (no improvements)	Vacant Property (HS)	SE 51st & Foster	2,409	1,986	NA	NA	NA
Emerson Alternative & Addition	Alternative (HS)	715 N Walker	6,530	5,669	-	-	6
Emerson Alternative (South)	Alternative (HS)	2219 SW 74th Street	7,303	5,990	-	-	6
Harding Charter School	Charter (HS)	3401-15 N Shartel	4,447	3,441	ND	ND	7
Seeworth South Charter School (Polk)	Charter (HS)	3806 N Prospect	923	777	ND	ND	6
Dove Science Academy (South OKC)	Charter (HS)	7202 S I-35 Service Road	3,728	3,504	ND	ND	NAS
Santa Fe South Pathways Middle College	Charter (HS)	7777 South May Avenue	7,242	6,157	ND	ND	NAS
Santa Fe South High School	Charter (HS)	6921 Plaza Mayor Boulevard	3,789	3,524	ND	ND	NAS
Oklahoma Centennial	High	1301 NE 101st	2,831	2,248	194	425	8
Capitol Hill	High	510-36 SW 36th	9,296	8,047	381	156	34
Classen SAS	Charter (HS)	1819 N Ellison	8,016	6,868	-	-	
Douglass	High	800-1000 N Eastern	4,946	4,488	269	308	24
US Grant	High	5016 S Pennsylvania	7,593	6,318	461	411	5
John Marshall	High	12201 N Portland Ave	3,847	3,514	215	274	4
Northeast Academy	Charter (HS)	3100-22 N Kelly	4,686	4,196	36	44	
Northwest Classen	High	2801 NW 27th	9,527	8,367	240	327	
Southeast	High	5401 S Shields	7,277	6,754	90	23	5
Star Spencer	High	3001 N Spencer Rd	985	726	103	148	11

Facility / Site not associated with attendance zone. GIS analysis performed using circular buffer equal to average area of attendance zones associated with peer facilities.

Portion of attendance area extends outside of City of Oklahoma City Limits

NA: Not applicable
ND: No Data
NAS: Not Assessed